

## **81 Phillip Street Goonellabah**

### **Table of Contents**

- | [Property Details](#)
- | [Photo Gallery](#)
- | [Map](#)
- | [Contact For Inspection](#)

## Property Details

**81 Phillip Street, Goonellabah**



**AFFORDABLE & FLOOD FREE**

**3**  **1**  **0** 

Positioned in a quiet spot of a no-through road, this solid, low-maintenance home offers privacy with a tree-lined outlook & rural views. Conveniently located just 1.5km from Goonellabah Shopping Centre, Sports & Aquatic Centre, 2.5kms from Goonellabah Public School & Kadina High School, making this home a practical choice for the young family.

- 3 Bedrooms
- 1 Bathroom
- Fully Fenced

Sitting on a spacious, fully fenced block, the property features a tidy layout with 3 comfortable bedrooms, a dining area and a separate lounge, fitted with ceiling fans to ensure comfort year-round. The central kitchen, complete with an electric upright stove, enjoys a pleasant green outlook.

Outside, the property boasts well-established fruit trees that bring a refreshing touch to the generous yard space. Fenced for the family pet, with side-gated access for cars, caravans or trailers, plus an abundance of open space for storage beneath the home.

The property is vacant ready for you to move into or for the investor to rent out. Call today.

---

**\$449,000**



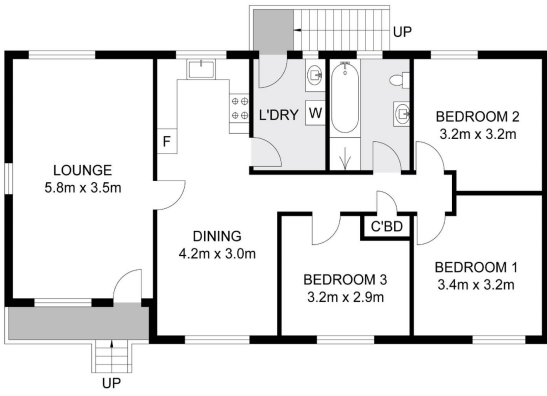
## Photo Gallery







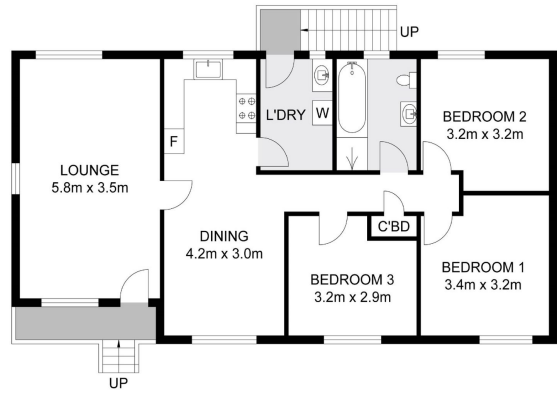




Dimensions are approximate. All information contained herein gathered from sources we believe to be reliable. However we cannot guarantee its accuracy and interested persons should rely on their own enquiries © visiomedia vision 2024.

**81 Phillip Street, Goonellabah**

INT : 85.2m<sup>2</sup>  
EXT : 3.8m<sup>2</sup>

Dimensions are approximate. All information contained herein gathered from sources we believe to be reliable. However we cannot guarantee its accuracy and interested persons should rely on their own enquiries © visiomedia vision 2024.

**81 Phillip Street, Goonellabah**

INT : 85.2m<sup>2</sup>  
EXT : 3.8m<sup>2</sup>



## Map



## Contact For Inspection



### **BENJAMIN CONTE**

LICENSED REAL ESTATE AGENT

---

0408 368 913

[ben@walmurray.com.au](mailto:ben@walmurray.com.au)